

partnership for
Sustainable Communities
an interagency partnership HUD • DOT • EPA



PARTNERING FOR SUSTAINABLE COMMUNITIES



Cambridge, MA



What Is a Sustainable Community?



“ The Partnership for Sustainable Communities is about achieving one goal: expanding opportunity for American families. HUD is proud to work with regions to cultivate and connect all the community assets needed to thrive, from jobs to transportation. Working with local leaders, I’m certain that the investments our agencies have made will enhance the health and wealth of communities for decades to come. ”

Secretary Julián Castro
U.S. Department of Housing and Urban Development



“ The Partnership is helping us align our transportation investments with the goals of providing affordable housing and preserving the environment. Together with HUD and EPA, we are making fundamental changes in how we work together to benefit all Americans and provide new Ladders of Opportunity for many. ”

Secretary Anthony Foxx
U.S. Department of Transportation



“ Communities know better than anyone else what they need. Through the Partnership for Sustainable Communities, we at the federal level are organizing ourselves to give communities tools to address economic and environmental challenges in the way that works best for them. ”

Administrator Gina McCarthy
U.S. Environmental Protection Agency



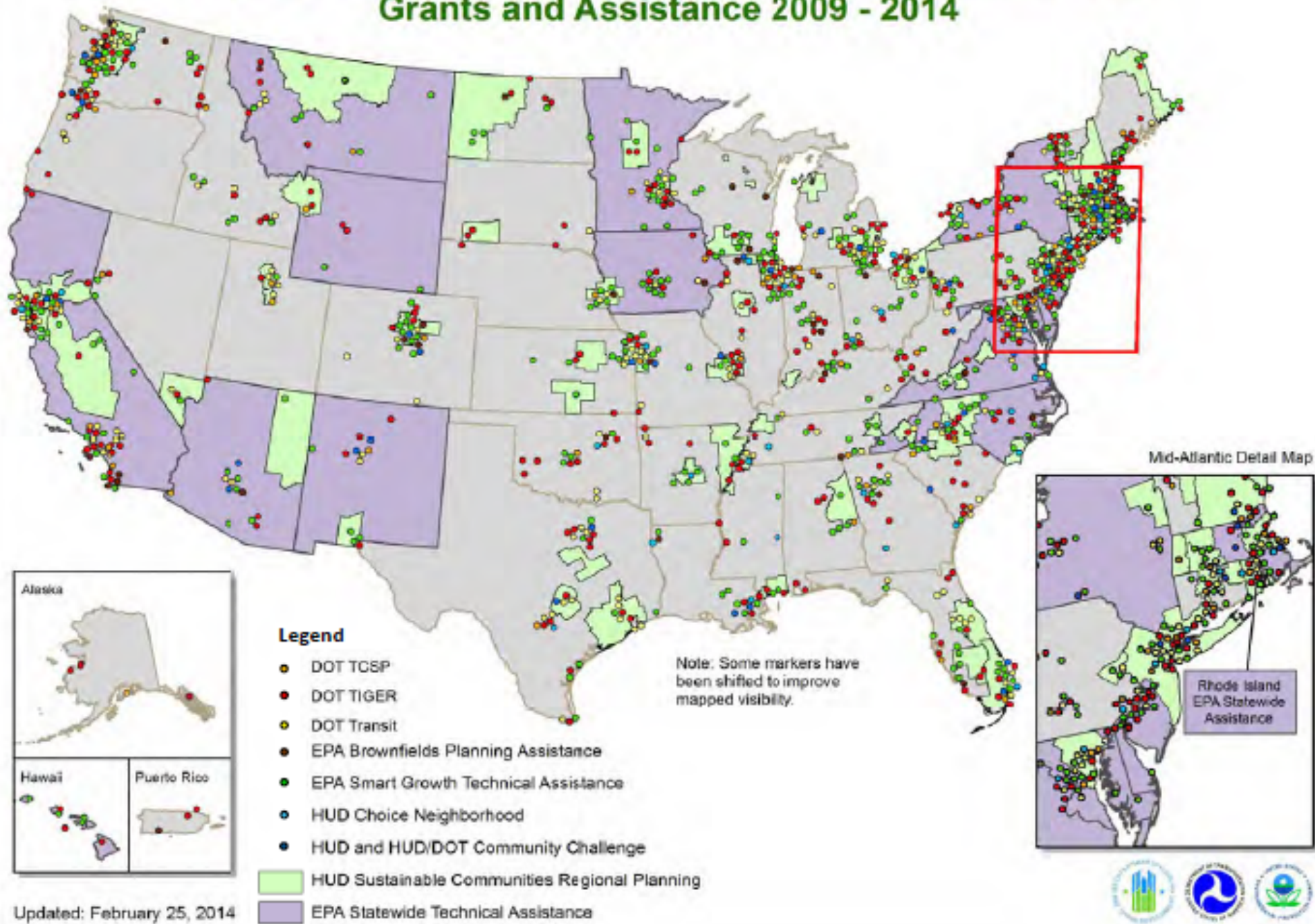
HUD-DOT-EPA Partnership for Sustainable Communities

Livability Principles

1. Provide more transportation choices.
2. Promote equitable, affordable housing.
3. Enhance economic competitiveness.
4. Support existing communities.
5. Coordinate policies and leverage investment.
6. Value communities and neighborhoods.



HUD-DOT-EPA Partnership for Sustainable Communities Grants and Assistance 2009 - 2014

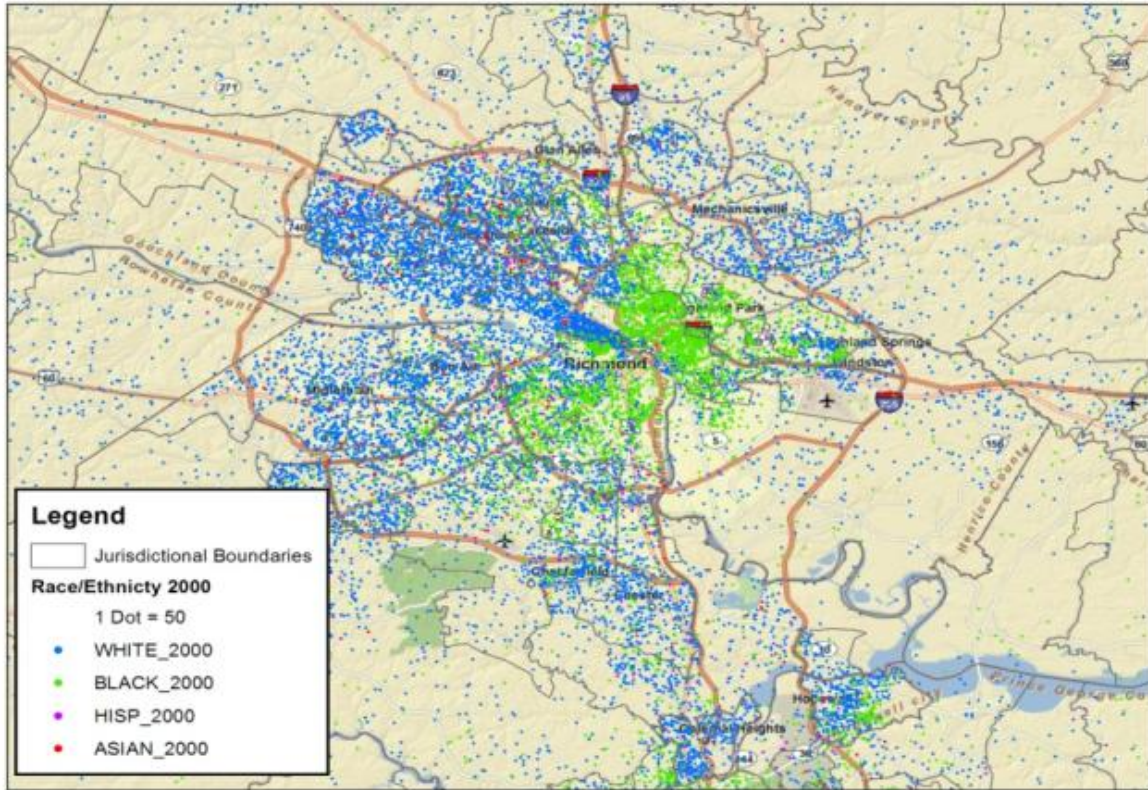


Updated: February 25, 2014



Fair Housing and Equity Assessments

Required for HUD SCI Regional Grantees

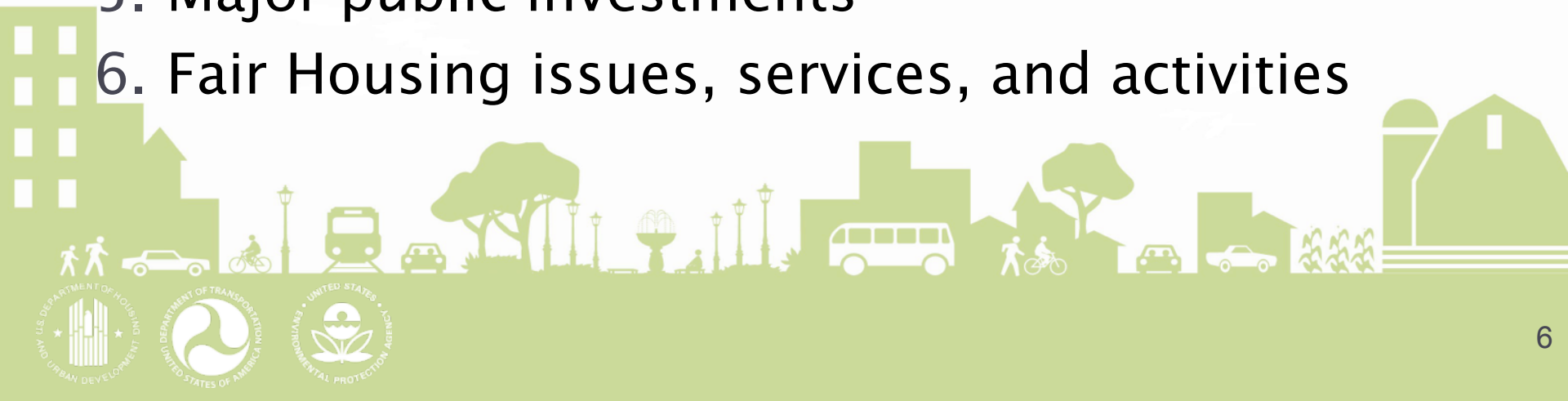


- Transportation access
- Job Access
- Health hazard exposure
- Crime and safety
- School proficiency
- Poverty
- Labor market engagement



Fair Housing and Equity Assessment Components

1. Disparities in housing need by protected class
2. Segregated areas, areas of increasing diversity and/or racial/ethnic integration
3. Racially/Ethnically concentrated areas of poverty
4. Access to existing areas of high opportunity
5. Major public investments
6. Fair Housing issues, services, and activities



HUD Healthy Communities Transformation Initiative

OBJECTIVES

To create a unified national effort that:

- ◆ Defines healthy community criteria
- ◆ Supports healthy communities research
- ◆ Showcases best and most promising practices for healthy communities

TOPIC AREAS

- Environmental Hazards
- Healthy Systems & Public Safety
- Neighborhood Characteristics
- Transportation
- Natural Areas
- Housing
- Employment Opportunities
- Educational Opportunities
- Social Cohesion
- Economic Health



HCTI Anticipated Products

1. Community Health Indicator System:

Indicators of social, environmental and economic conditions can be used to evaluate baseline conditions and monitor progress towards objectives in a neighborhood, planning area or city.

2. “Healthy Development” Checklist:

A downloadable checklist of development targets (associated with each indicator) to help jurisdictions assess whether plans and projects help achieve community health objectives.

3. Menu of Policies and Design Strategies:

A listing of potential actions that project sponsors or policymakers can take to achieve development targets in the checklist and advance community health objectives.



Location Affordability Portal

Why Combined Transportation and Housing Costs?

- Transportation is the second–biggest household budget item after mortgage payments or rent (and exceeds housing costs for many lower–income and rural families)
- Both housing and transportation costs are tied to location and demographic characteristics
- Transportation costs can be a major burden on rural and lower–income households



Enter a location...



Baltimore

Block Group 245101308051

Household Profile

Moderate-Income Family

\$54,893 annual income

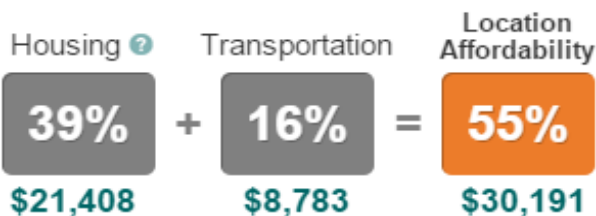
3 people

1 commuter

Switch to this profile and location in [My Transportation Cost Calculator](#)

Average costs as a percent of income in this location for Moderate-Income Family Households:

Renter Owner Combined



On average, Moderate-Income Family Households in this location would:

Own **1.5** vehicles

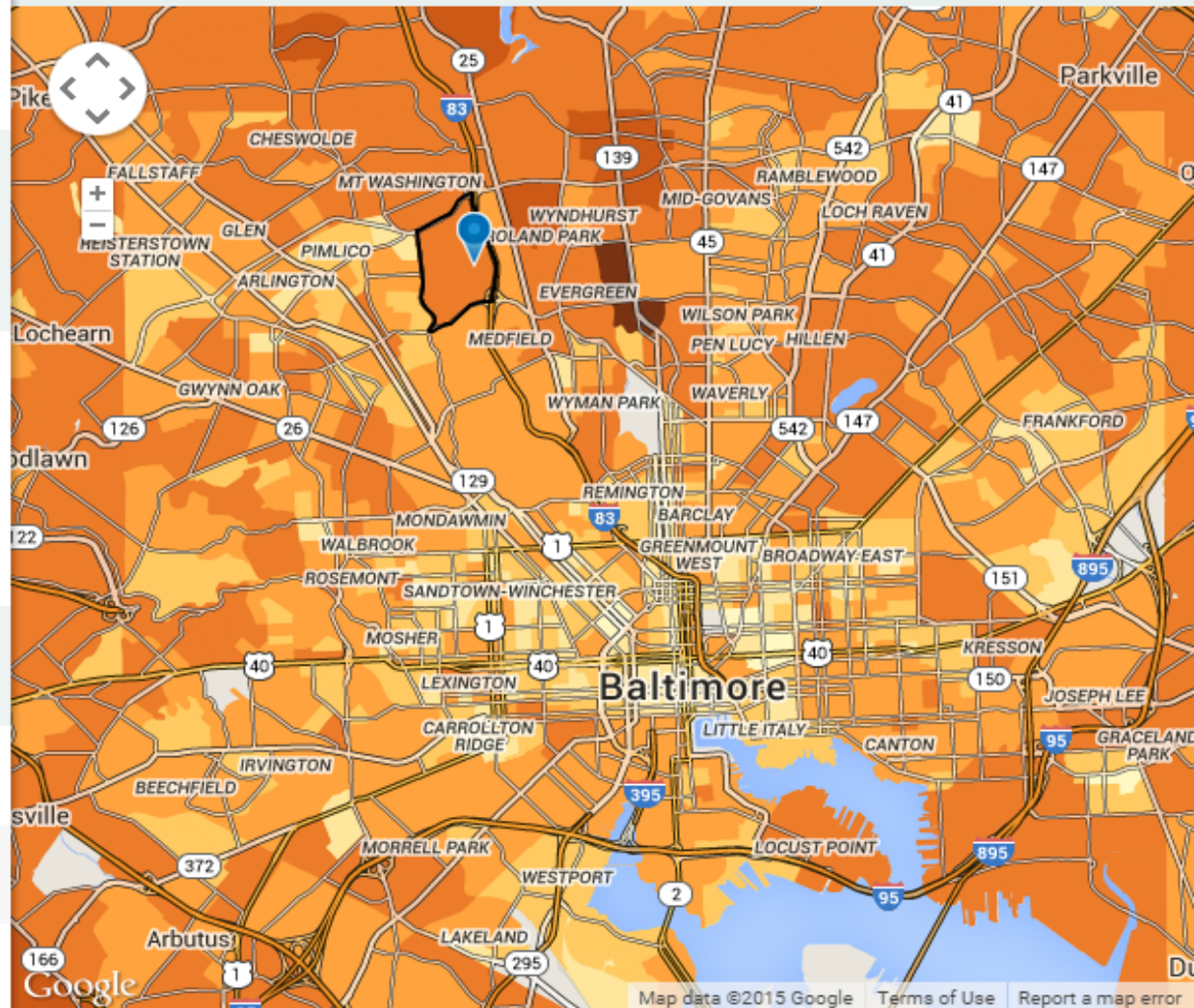
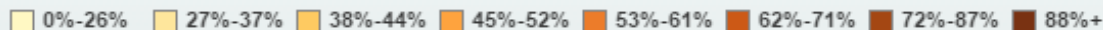
Drive **15,307** miles annually

Take **113** transit trips annually

Information on Map

Location Affordability (Housing and Transportation, % of Income)

Moderate-Income Family Household

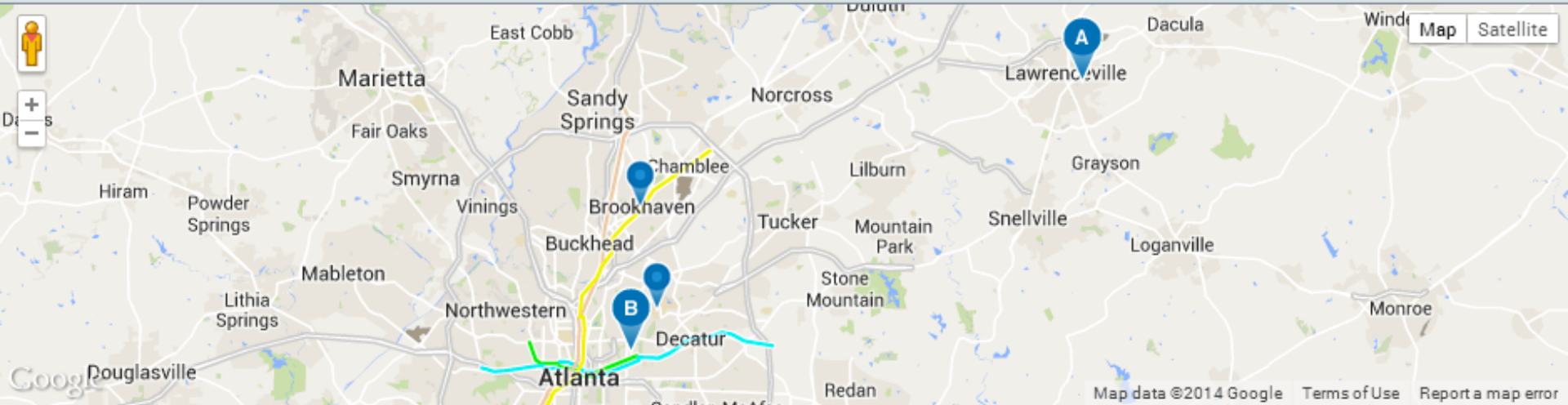


Visit: www.locationaffordability.info

Enter a new home address...

+ ADD

Enter an address, intersection, city, county, state or zip code to add marker. Markers may be dragged to a new location.



Locations	Your Household	Housing	Transportation	Total Housing and Transportation Cost
A 168 Wayside Drive, Lawrenceville, GA 30046, USA		\$17,004	\$24,948	\$41,952
B 1305 Iverson Street Northeast, Atlanta, GA 30307, USA		\$23,400	\$9,816	\$33,216

+ Add a new home address

B 1305 Iverson Street Northeast, Atlanta, GA 30307, USA

Sustainable Communities Indicator Catalog



[Home](#) >
 [About Us](#) >
 [In Your Community](#) >
 [Resources and Tools](#)

Home > Indicators

Indicator Topic

- Housing
- Land Use
- Transportation

Geographic Scale

- County
- Municipality
- Neighborhood/Corridor
- Project
- Region

Level of Urbanization

- Rural
- Suburban
- Urban

Issue of Concern

- Access and equity
- Affordability
- Community and Sense of Place
- Economic competitiveness
- Environmental quality
- Public health

Apply

Indicator Name	Indicator Topic	Issue of Concern	Level of Urbanization	Geographic Scale
Intersection Density	Land Use, Transportation	Access and equity, Community and Sense of Place, Environmental quality, Public health	Rural, Suburban, Urban	Neighborhood/Corridor, Project
Access to transit: Percentage of jobs within walking distance of transit service	Land Use, Transportation	Access and equity, Affordability, Economic competitiveness, Environmental quality	Rural, Suburban, Urban	County, Municipality, Region
City Fleet: Gas Mileage	Transportation	Economic competitiveness, Environmental quality	Rural, Suburban, Urban	County, Municipality, Region
Walkability	Land Use, Transportation	Access and equity, Community and Sense of Place, Environmental quality, Public health	Rural, Suburban, Urban	County, Municipality, Neighborhood/Corridor
Fuel Consumption/Purchase	Transportation	Economic competitiveness, Environmental quality	Rural, Suburban, Urban	County, Municipality, Region

Transportation and Health Tool

Goal:

- ◆ help transportation decision-makers understand many of the issues in play at the intersection with public health; inform health-supportive state and regional transportation policies and project decisions; and strengthen collaborations between transportation and public health sectors.

About:

- ◆ an easy-to-use online tool, pre-populated with region and state-specific data;
- ◆ an assessment of where your state or MPO is performing well, and where to incorporate health measures and decisions within the transportation decision- and policy-making process;
- ◆ recommendations for policy improvements;
- ◆ an evidence base for integrating health and transportation.



Connectivity and Accessibility

“Who is traveling, where, and how?”

- **Communities are trying to measure connectivity**
 - AMPO/NARC Survey
 - Examples from across country
- **Congress / Administration focus on national performance measures**
- **USDOT is looking to provide help.**
 - Unified Planning Work Programs
 - Building on Environmental Justice guidance
 - Investing in Research
 - Summit later this year



THANKS!

Sunaree Marshall

Sunaree.K.Marshall@hud.gov

Lilly Shoup

Lilly.shoup@dot.gov

